

**2021**  
MODEL YEAR

CLASS A DIESEL  
**NAUTICA**

 **HOLIDAY RAMBLER**  
holidayrambler.com

MODELS 33TL | 34RX | 35MS | 35QZ

NAUTICA 34RX  
Shown in Boardwalk Graphics



## SIGNIFICANT PRODUCT FEATURES

### CHASSIS

- Freightliner Custom Raised Rail Chassis
- Cummins®, 6.7L, 340HP Engine
- 700 lb/ft Torque
- Allison 2500 Series Transmission, 6-Speed
- V-Ride
- 100 Gallon Fuel Tank
- 33,000# GCWR
- Michelin Tires 275/80R 22.5"
- DriveTech / Optiview
- 55° Turning Radius

### EXTERIOR

- Delta Foundation
- Full Pass Through Exterior Storage
- Designed Front Cap
- Top Mounted Windshield Wipers
- Hood Design | Access to Generator
- Exterior Mirrors Mounted on Front Cap
- Premium Four Color, Full Body Paint
- 100 Fresh, 65 Gray, 45 Black Tanks (Gallon)
- Aqua-Hot® 250D
- Luggage Doors with Hidden Hinges

### INTERIOR

- Full Flat Floor (Select Floorplans)
- All Electric Coach
- Front Power Roller Blinds
- Residential Refrigerator 18.7cu. ft³ and Induction Cooktop
- Solid Surface Galley Top
- Glass Tile Galley Backsplash
- Stainless Steel Farmhouse Galley Sink
- 360° Window Treatment Surround

- Tarkett® Flooring
- Fireplace (Select Floorplans)
- King Bed
- Fiberglass Shower w/Glass Door

### OPTIONS

- Stackable Washer/Dryer
- Motion Power Lounge
- Hide-A-Loft™ Drop Down Queen Bed
- Roof Vent Rain Covers
- Central Vacuum System
- Dual 15K BTU A/C
- Power Cord Reel
- 1st Full Bay, 90" Slide Out Tray
- Connectivity Package  
(WiFi Ranger Sky Pro, 265 Watt Solar Panel & Cellular Booster)
- Mobileye



## ALL-NEW MODEL FOR 2021

**2021**  
MODEL YEAR

CLASS A DIESEL

**NAUTICA**



HOLIDAY RAMBLER

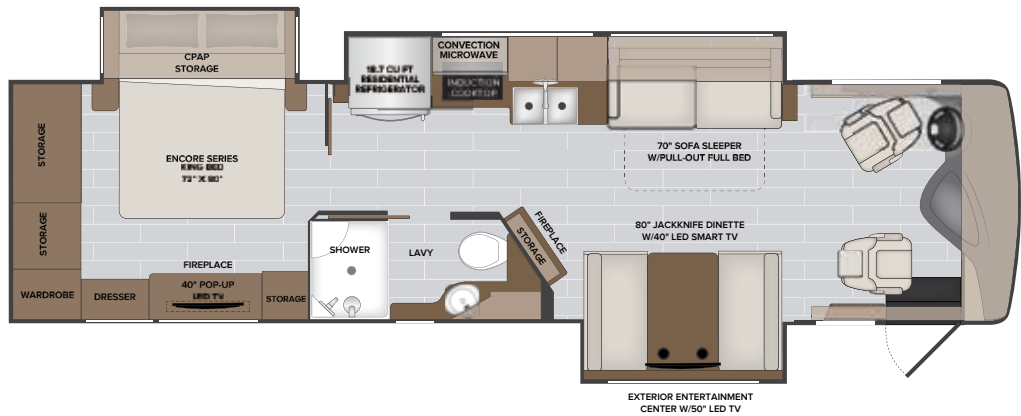
holidayrambler.com

## FLOORPLANS

### 33TL Options: 086 | 096 | 131 | 189 | 209 | 217 | 230 | 242 | 436 | 572 | 579 | 671 | 965

#### TOP FLOORPLAN FEATURES

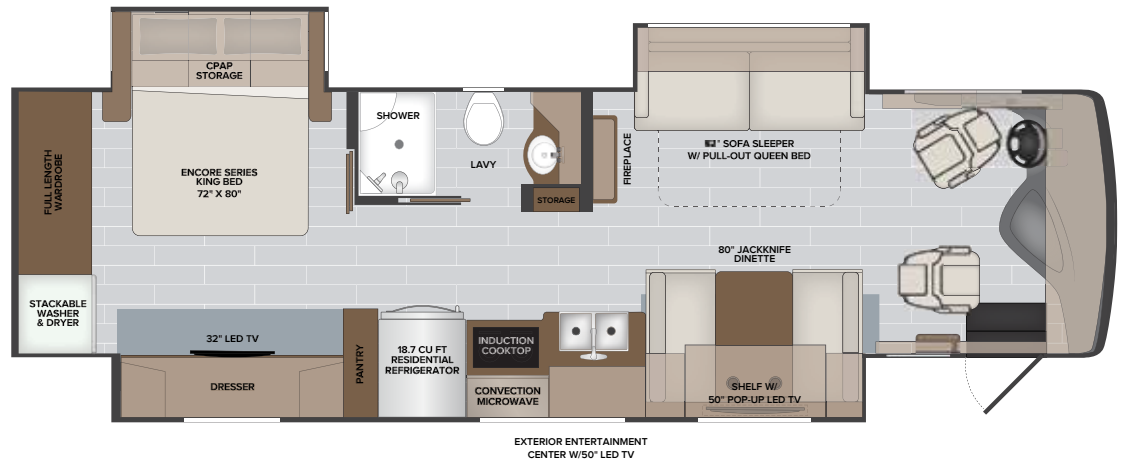
1. Sleeping up to 7
2. Triple Slide Floorplan
3. Abundance of Master Bedroom Storage
4. Articulating King Bed
5. 39" Pop-up TV & Fireplace in Bedroom
6. CPAP Storage Overhead Cabinetry in Master Bedroom
7. Fireplace at Feature Wall
8. Solid Surface Galley w/ Full Backsplash
9. Feature Cabinet w/Glass Door & Accent Light and Fireplace
10. Fiberglass Shower Enclosure



### 34RX Options: 086 | 096 | 131 | 189 | 209 | 217 | 230 | 242 | 436 | 572 | 579 | 671 | 965

#### TOP FLOORPLAN FEATURES

1. Expansive Full Wall Slide Floorplan
2. 360° Window Treatment Surround
3. Residential Living Room w/ Cabinet w/Fireplace below
4. Large Functional Galley w/ Solid Surface & Panoramic Galley Window
5. CPAP Storage Overhead Cabinetry in Master Bedroom
6. 82" Sofa w/Queen Size Pull-out Bed
7. 80" Jack-knife Dinette w/Larger Dinette Table
8. Full Rear Wardrobe & Large Full Size Dresser
9. Articulating King Bed
10. Accent Lighting in Living Area Slide-out Trim



#### NAUTICA OPTIONS

- 086** Connectivity Package  
Includes: WiFi Ranger Sky Pro, Cell Booster and 265w Solar Panel
- 096** KING® Universal Satellite System
- 131** Washer/Dryer — Stackable
- 189** Power Passenger Seat w/Power Footrest
- 209** Motion Power Lounge
- 217** Hide-a-Loft™ Drop Down Queen Bed w/32" LED TV

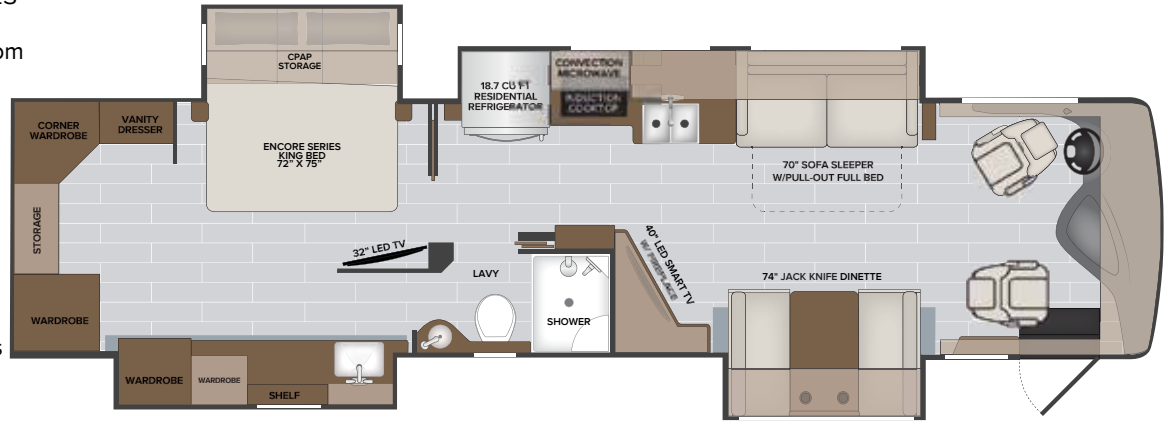
- 230** Roof Vent Rain Covers
- 242** Dual 15K BTU A/C
- 436** CSA — Freightliner Package
- 572** Central Vacuum System
- 579** Mobileye Collision Mitigation and Safe-T-View Interior Camera Display
- 671** Power Cord Reel
- 965** 1st Full Bay 90" S/O Tray

# FLOORPLANS

## 35MS Options: 086 | 096 | 131 | 189 | 209 | 217 | 230 | 242 | 436 | 572 | 579 | 671 | 965

### TOP FLOORPLAN FEATURES

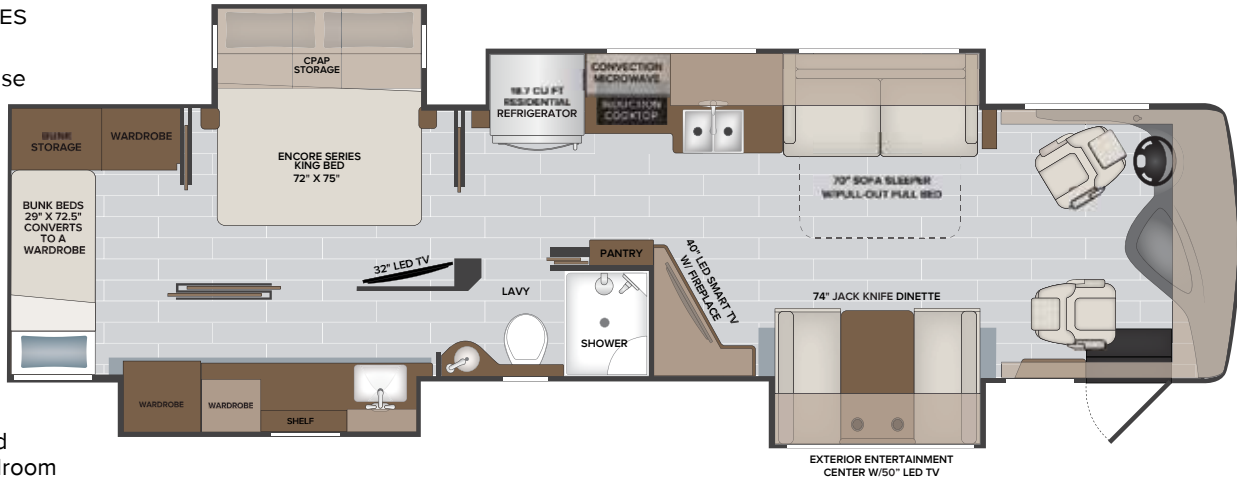
1. Sleeps up to 7
2. Enormous Master Bedroom
3. Cavernous Storage
4. CPAP Storage Overhead Cabinetry in Master Bedroom
5. Articulating King Bed
6. Large Rear Wardrobe w/Vanity Mirror
7. Stainless Steel Farmhouse Galley Sink
8. Ultra-functional Galley w/Residential Appliances
9. Fiberglass Shower w/Glass Door
10. Residential Living Room with Entertainment Cabinet w/Swing-out w/Fireplace and Additional Storage



## 35QZ Options: 086 | 096 | 131 | 189 | 209 | 217 | 230 | 242 | 436 | 572 | 579 | 671 | 965

### TOP FLOORPLAN FEATURES

1. Sleeps up to 8
2. Unique Private Bunkhouse Quad Slide Floorplan
3. Multi Entrance Lavy
4. 39" LED TV w/Fireplace
5. Large Galley w/Solid Surface Top and Dedicated Pantry
6. Entertainment Cabinet w/Swinging-Out Fireplace and Additional Storage
7. Private Master Bedroom w/Articulating King Bed
8. CPAP Storage Overhead Cabinetry in Master Bedroom
9. Bunk beds that Converts to Wardrobe
10. Dual Exterior Awnings for Full Patio Coverage



### NAUTICA OPTIONS

- 086** Connectivity Package  
Includes: WiFi Ranger Sky Pro, Cell Booster and 265w Solar Panel
- 096** KING® Universal Satellite System
- 131** Washer/Dryer — Stackable
- 189** Power Passenger Seat w/Power Footrest
- 209** Motion Power Lounge
- 217** Hide-a-Loft™ Drop Down Queen Bed w/32" LED TV

- 230** Roof Vent Rain Covers
- 242** Dual 15K BTU A/C
- 436** CSA — Freightliner Package
- 572** Central Vacuum System
- 579** Mobileye Collision Mitigation and Safe-T-View Interior Camera Display
- 671** Power Cord Reel
- 965** 1st Full Bay 90" S/O Tray



**2021**  
MODEL YEAR

CLASS A DIESEL

**NAUTICA**



**HOLIDAY RAMBLER**  
holidayrambler.com

## DECOR & CABINETRY

### COPPER RIDGE



SOFA



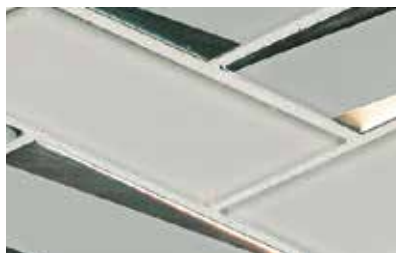
LIVING ACCENT



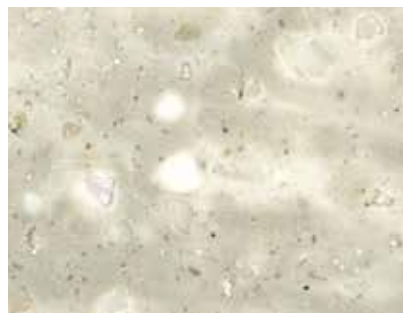
BEDSPREAD



VALANCE



BACKSPLASH



COUNTERTOP



FLOORING



AMBER



FOSSIL



NUTMEG



WHISPERING WIND

**2021**  
MODEL YEAR

CLASS A DIESEL  
**NAUTICA**

 **HOLIDAY RAMBLER**  
holidayrambler.com

## DECOR & CABINETRY

### REFLECTION



SOFA



LIVING ACCENT



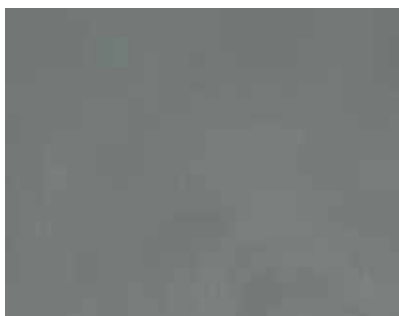
BEDSPREAD



VALANCE



BACKSPLASH



COUNTERTOP



FLOORING



AMBER



FOSSIL



NUTMEG



WHISPERING WIND



**2021**  
MODEL YEAR

CLASS A DIESEL

**NAUTICA**



**HOLIDAY RAMBLER**  
holidayrambler.com

## DECOR & CABINETRY

### METROPOLIS



SOFA



LIVING ACCENT



BEDSPREAD



VALANCE



BACKSPLASH



COUNTERTOP



FLOORING



AMBER



FOSSIL



NUTMEG



WHISPERING WIND

**2021**  
MODEL YEAR

CLASS A DIESEL

**NAUTICA**



**HOLIDAY RAMBLER**

holidayrambler.com

## GRAPHICS



**BOARDWALK**



JAVA  
WHITE  
(BASE)



DARK  
CHERRY



LOUBLER  
BROWN



SMOKE



**CRUSH**



BRIGHT  
SILVER  
(BASE)



COBALT  
BLUE



DOLPHIN  
GREY



OXFORD  
WHITE



**SURFSIDE**



BRIGHT  
SILVER  
(BASE)



RAZOR  
BLUE



ARTIC  
BLUE



MINERAL  
GREY



**WAVE**



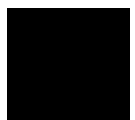
NIMBUS  
GREY  
(BASE)



ALPINE  
WHITE



RAZOR  
BLUE



BRILLIANT  
BLACK

## CHASSIS

MODEL	33TL	34RX	35MS	35QZ
Wheelbase (inches)	206"	206"	242"	242"
Front GAWR (lbs)	12,400	12,400	12,400	12,400
Rear GAWR (lbs)	20,000	20,000	20,000	20,000
GCWR (lbs)	33,000	33,000	33,000	33,000
Hitch Rating Weight (lbs)	10,000	10,000	10,000	10,000
Tongue Weight (lbs)	1,000	1,000	1,000	1,000
Fuel Capacity (lbs)	100	100	100	100

## DIMENSIONS & CAPACITIES

MODEL	33TL	34RX	35MS	35QZ
Overall Length (inches)	35' 4"	35' 4"	38' 4"	38' 4"
Overall Height (inches with A/C)	12' 10"	12' 10"	12' 10"	12' 10"
Overall Width (inches maximum)	102"	102"	102"	102"
Interior Height (inches maximum)	84"	84"	84"	84"
Interior Width (inches maximum)	96"	96"	96"	96"
Patio Awning Width (ft./in.)	18' 0"	17' 0"	16' 0"	16' 0"
Second Patio Awning Width (ft./in.)	N/A	N/A	11' 0"	11' 0"
Interior Storage (cu. ft.)	140	183	179	172
Exterior Storage (cu. ft.)	135	135	190	190
Fresh Water Holding Tank (gal)	96	96	96	96
Grey Water Holding Tank (gal)	65	65	65	65
Black Water Holding Tank (gal)	45	45	45	45
Aqua-Hot 250 Diesel	S	S	S	S

**DELTA FOUNDATION**  
 Freightliner Custom Railed Chassis  
 Cummins®, 6.7L, 340HP  
 700 lb/ft Torque  
 Allison 2500 Series Transmission, 6-Speed



**IMPORTANT—PLEASE READ:** Product information, photography and illustrations included in this publication were as accurate as possible at the time of printing. For further product information and changes, please visit our website at [www.holidayrambler.com](http://www.holidayrambler.com) or contact your local Holiday Rambler dealer. Prices, materials, design and specifications are subject to change without notice. All weights, fuel, liquid capacities and dimensions are approximate. Holiday Rambler has designed its recreational vehicles to provide a variety of uses for customers. Each vehicle features optimal seating, sleeping, storage and fluid capacities. The user is responsible for selecting the proper combination of loads (i.e., occupants, equipment, fluids, cargo, etc.) to ensure that the vehicle's capacities are not exceeded.